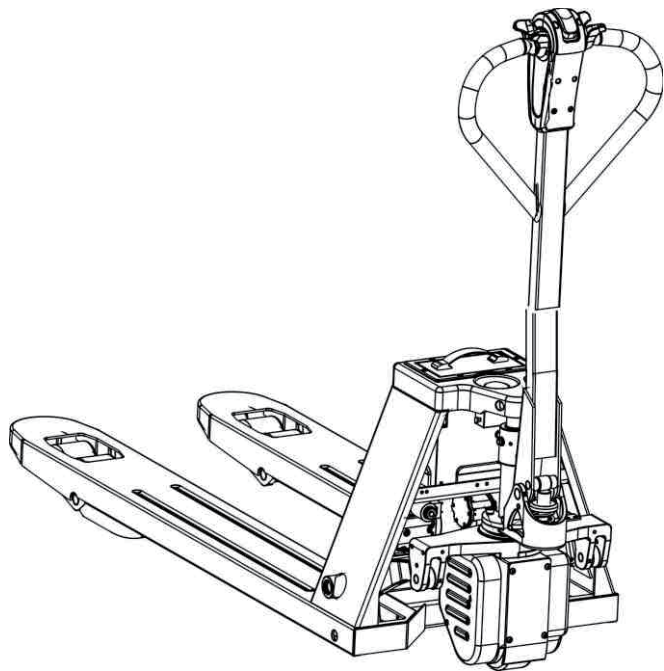


Electric Pallet Truck

PJE30

Operation Manual



Content

1. Foreword	1
2. Application	1
3. Parameters	1
4. Operation Guide	2
4.1 Operation Pre-Check.....	2
4.2 Operation.....	3
5. Battery & Charger Use and Maintenance	3
5.1 Charger.....	3
5.2 Battery Charging.....	3
5.3 Button function description	3
6. Maintenance	4
6.1 Routine maintenance.....	4
6.1.1 Daily inspection.....	5
6.1.2 Weekly inspection.....	5
6.1.3 Half yearly inspection.....	5
6.2 Hydraulic oil replacement.....	5
7. Transport and Storage	5
8. General troubleshooting	6

Warning : Read and follow all the instructions before operation
confirm all the security components are not damaged .

1. Foreword

Please read this manual carefully before using this machine to avoid operating mistakes. Correct operation and periodic inspections are important factors for operation efficiency and service life of the machine.

These important contents will be described in the relevant sections below.

All the information in this manual is based on the valid data of the product at the time of printing. The manufacturer reserves the right to modify the product at any time but under no obligation to inform users. Therefore, any changes to the product need to be checked and checked in due course.

2. Application

Full electric pallet truck EPT30 with battery powered traveling & lift / lowering move pallets or goods for short-distance transport, is widely applied in workshops, warehouse, dock, station and depot. It is an ideal tool to improve efficiency and reduce labor intensity.

3. Parameters

PJE30 full electric pallet truck parameter Figure 1 & chart 1.

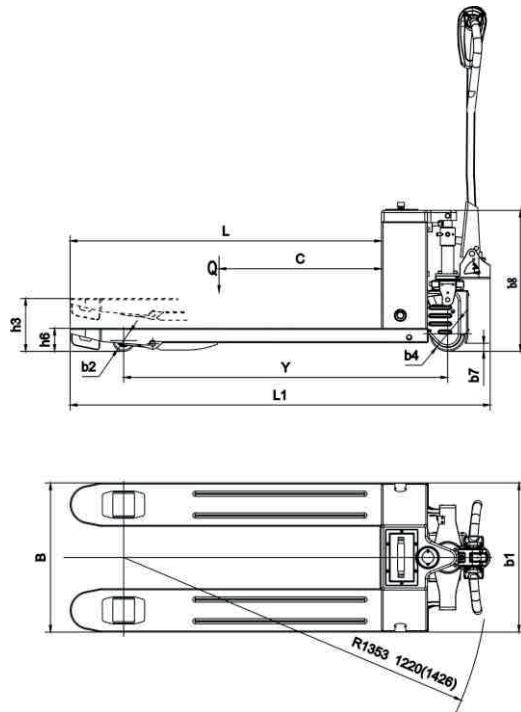


Figure 1

Chart1

Description			Model
			PJE30
Capacity	Q	lb	3000
Load Center	C	Inch	24
Max. Lifting height	h3		7.7
Min. Lowered height	h6		3.35
Fork length	L		45/48
Overall Fork width	B		21.6/27
Ground Clearance	b7		1.18
Traveling speed(laden/unladen)		km/h	3.5/4
Lifting speed(laden/unladen)		mm/s	32/55
Lowering speed(laden/unladen)		mm/s	60/32
Battery Voltage/Capacity			24V/20Ah
Wheel base	Y	Inch	47/50
Min. Turing Radius(include handle)	Wa	Inch	53/56
Dimension	Overall length	L1	61/64
	Overall Width	b1	21.6/27
	Chassis Height	b8	20.5
Wheel	Load wheel Dia.	b2	3.15
	Drive wheel Dia.	b4	5.1
Self-Weight			lbs 54.5~58

4. Operation Guide

4.1 Pre-check

- ① If the truck is damaged during transportation, it must not be put into use.
You must contact the dealer immediately.
- ② Greasing and hydraulic oil has been filled before delivery.
- ③ If there are two batteries delivered with truck, the batteries are charged.
- ④ Full inspection has to be done before operation.

4.2 Operation

- ① The truck can only be allowed to use on hard ground. Do not work on oily ground to avoid slipping.
- ② Turn on the switch, make sure the battery is full, then start to operate.
- ③ Do not use the truck when battery is low. Low voltage use will damage battery. Charge and discharge the battery on a regular basis when truck is unused for long time (over one month).
- ④ Press the lifting button to lift forks, release the lifting button and forks stop. Press the lowering button to lower forks, release the lowering button and forks stop.
- ⑤ Keep a safety distance from the people around when the truck is loading and unloading. Pay special attention when the cargo is too high or too heavy.
- ⑥ User must comply with load curve. Overloading is strictly prohibited to avoid mechanical damage or casualties.
- ⑦ When truck is travelling, position forks to the lowest. Do not lift and travel at the same time. Slow down when turning, climb up or down a slope. Turning on slope is prohibited, to avoid danger.
- ⑧ Put forks at the lowest position after use. Do not park the truck at slope. Switch off the truck for longer working life one charge.

5. Battery & Charger Use & Maintenance

5.1 Charger

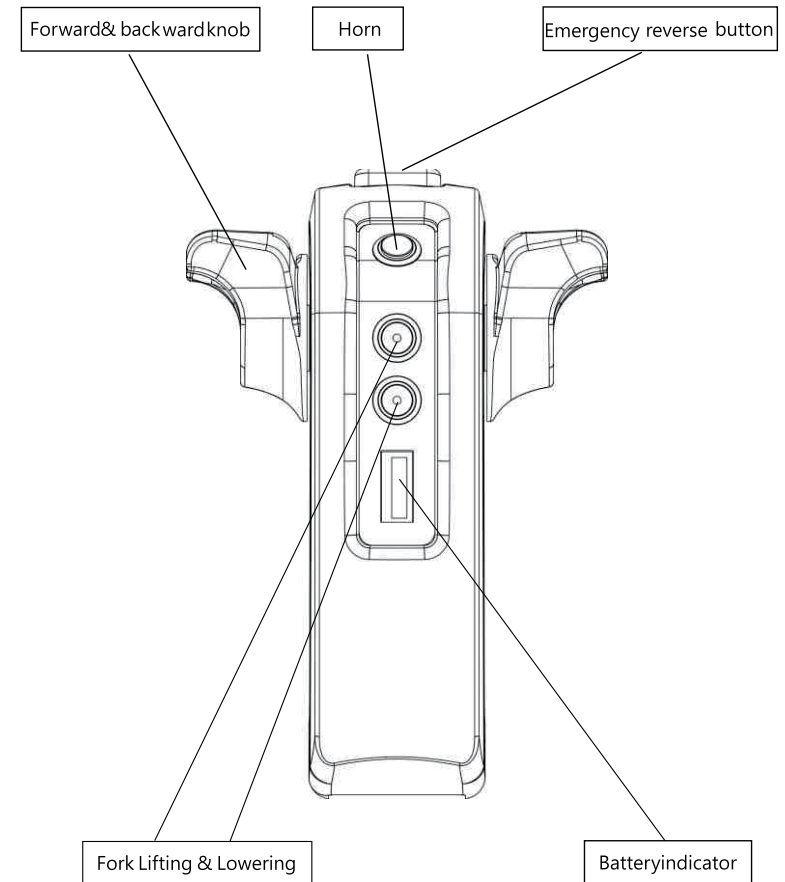
- ① The charger has excellent constant current characteristics and extremely fast over-current protection, which automatically stabilizes the output current when the voltage fluctuates.
- ② Float charging device effectively prevents over charging. The electrolyte will not be turbid and the service life will be prolonged.

5.2 Battery Charging

- ① Connect the charger to battery charging socket, use the external charger to recharge the battery.
- ② Keep good ventilation, no smoking or open flame during charging period.
- ③ Cut charging power and remove charging cable after full charging.
- ④ Battery maintenance and capacity check after charging.

5.3 Button function description

Functions of the buttons on handle:



6. Maintenance

6.1 Routine maintenance

The truck should be regularly checked and maintained to prevent fatigue, wear and damage of parts, and to detect possible hidden dangers before a serious damage occurs.

Battery is the energy source of the truck. It can provide sufficient power according to the corresponding instructions. The long-lasting battery endurance can keep the machine in a good working condition.

6.1.1 Daily inspection

- ① Check if battery is full (check battery indicator)
- ② Lift the forks to highest to check if hydraulic oil is adequate. Add YA-N32 hydraulic oil or similar oil if needed.

6.1.2 Weekly inspection

Truck users should spend a few minutes per week cleaning the machine, with special attention to remove winding materials such as silk, linen, and rags on wheels and axles.

6.1.3 Half yearly inspection

Check brush wear in the motor, replace undesirable brush to keep good contact.

6.2 Hydraulic oil replacement

Users are advised to replace hydraulic oil after 1 month use (or working hours up to 200hrs). Even if the operating hours has not been reached, hydraulic oil should be replaced once a year. Use YA-N32 hydraulic oil or similar oil, which must be filtered clean and with sufficient amount. Fully lift the forks 2-3 times to ensure no excess air inside the hydraulic system, and then truck can be put into normal use. If forks fail to rise to the required height, more hydraulic oil is need to be filled.

Power switched on, but power indicator light off	Loose wire connection, bad switch contact, results in current interruption	Check battery wire connection, fasten screw on all connection joints, keep switch contact smooth
Unstable lifting and lowering rate	Air inside cylinder	Get rid of the air in the cylinder by fully lifting and lowering 2-3 times.
No Lifting	Lack of hydraulic oil	Fill in hydraulic oil
	Low battery	Recharge the battery
	Hydraulic oil leak	Inspection and repair, changing cylinder seals, fasten screws of the oil tube joint.
	Over load	Lifting load not allowed to exceed truck capacity
Abnormal noise from power system during lifting & lowering	Lack of hydraulic oil or oil is dirty	Fill in enough hydraulic oil. Replace dirty hydraulic oil with clean oil
	Noise from scraping between motor and loosened motor cover	Tighten the fixed screws
	Humid environment	Ambient humidity $\leq 90\%$

7. Transport and Storage

This EPT15 economical electric pallet truck must be placed in a horizontal position during transport and storage to prevent oil spillage. During storage, it should be kept clean to avoid moisture and harsh climate. The ambient temperature must not exceed 40°C. If the battery is not used for a long time, it should be recharged at a proper time.

8. General Troubleshooting

Fault	Possible Fault Cause	Solution
-------	----------------------	----------

(PJE30) Series Quality Parts

Electric Pallet Truck

Warning Read and observe all warnings on this unit
before operating it.

Warning DO NOT operate this equipment unless all
factory installed guards and shields are
properly secured in place.

Date:2017

PARTS ORDERING INSTRUCTIONS

HOW TO ORDER

When ordering the parts, please supply part number, parts name, quantity, model and serial number of your machine. Supplying this information will assure prompt, efficient handling of your order.

Since your dealer carries many parts in stock and maintains up-to-date prices on all parts, he will be able to process your order immediately. If, for some reasons, the parts is not in stock, he will order it from the factory. In either event, he maintains a current file of service manuals, which give all available parts ordering or technical information.

WHERE TO ORDER

Always order parts from the dealer who sold you the machine. If it is necessary for the dealer to order parts from the factory, he is able to get prompt service for you. Parts are shipped in accordance with shipping instructions given on the order.

INSTRUCTION FOR RETURNING PARTS

Under NO CIRCUMSTANCES parts will be accepted at the factory for credit without prior approval. We can not accept responsibility for parts returned without authorization.

If you have some parts which must be returned, contact your dealer. If he believes parts be returned, he will arrange for authorization to return the parts.

CHANGES

When changes are made to the machine, revised pages for this manual will be issued. These pages must be inserted in your parts manual as soon as they are received. Failure to keep your parts manuals up to date will result in confusion and may cause you to order wrong parts.

ALL RIGHT RESERVED COPYRIGHT

2017-11 1st EDITION

INDEX

ITEM#	DESCRIPTION	PAGE
Fig.1	Handle assembly	11-12
Fig.2	Control box assy	13-14
Fig.3	Driving system	15-16
Fig.4	Drive assembly	17-18
Fig.5	Hydraulic unit assembly	19-20
Fig.6	Cylinder assembly	21-22
Fig.7	Frame	23-24
Fig.8	Double loading wheel	25-26
Fig.9	Single loading wheel	27-28
Fig.10	Charger	29-30

Fig.1 Handle assembly

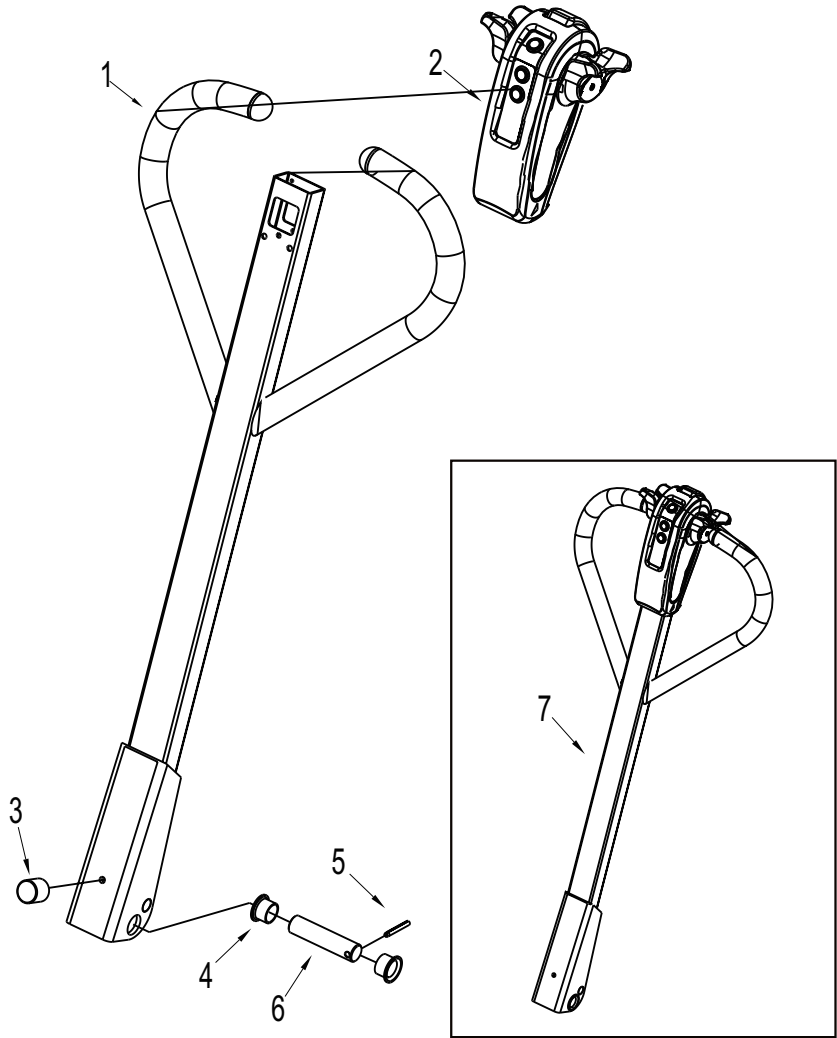


Fig.1 Handle assembly

ITEM			#FOR
#	PART#	NAME	ASSY.
1	30201001	Handle body	1
2	30201002	Control box assy	1
3	30202001	Limit washer	1
4	21402003	Self-lubricating Bearing	2
5	20901001	Spring Pin	2
6	30202011	Handle mounting Shaft	1
7	30201013	Handle assembly	1

Fig. 2 Control box assembly

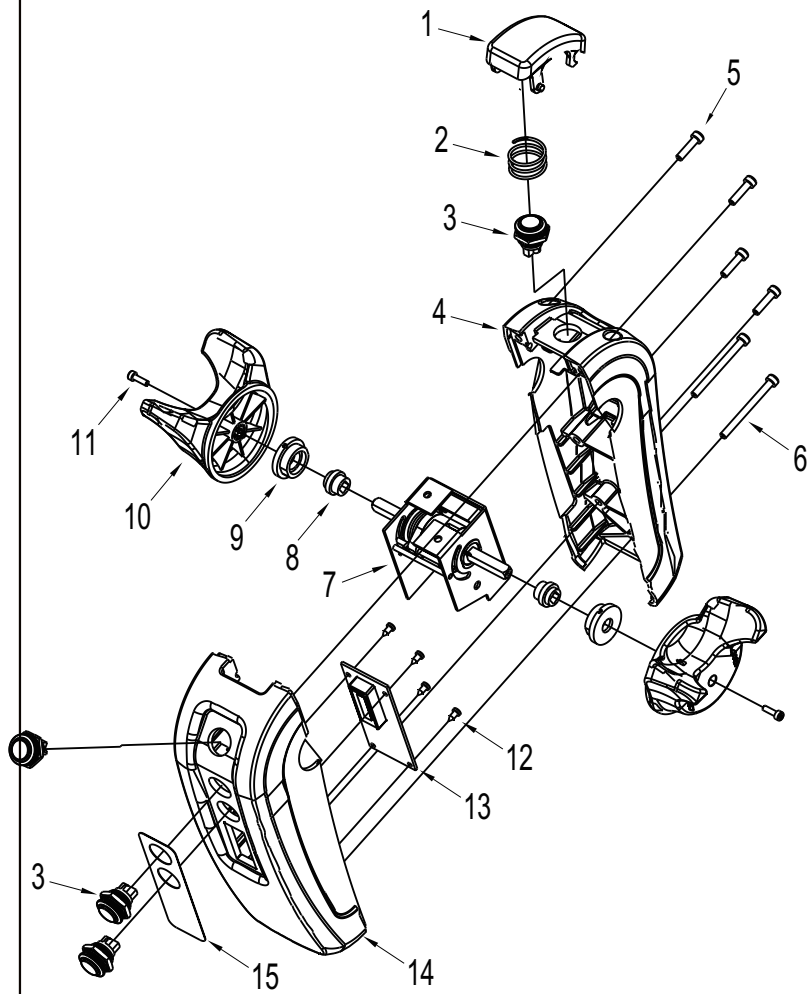


Fig. 2 Control box assembly

ITEM				#FOR
#	PART#	NAME		ASSY.
1	30202004	Emergency reverse button		1
2	30202005	Spring		1
3	10301010	Inching switch		4
4	30202002	Bottom cover		1
5	20101402	Screw		4
6	20101401	Screw		2
7	10301012	Accelerator assembly		1
8	30202008	Inner spacer column		2
9	30202007	Outer spacer column		2
10	30202009	Control knob		2
11	20101301	Screw		2
12	20301002	Screw		4
13	10301011	Monitor		1
14	30202003	Control box cover		1
15	30202006	Sticky board		1

Fig. 3 Driving system

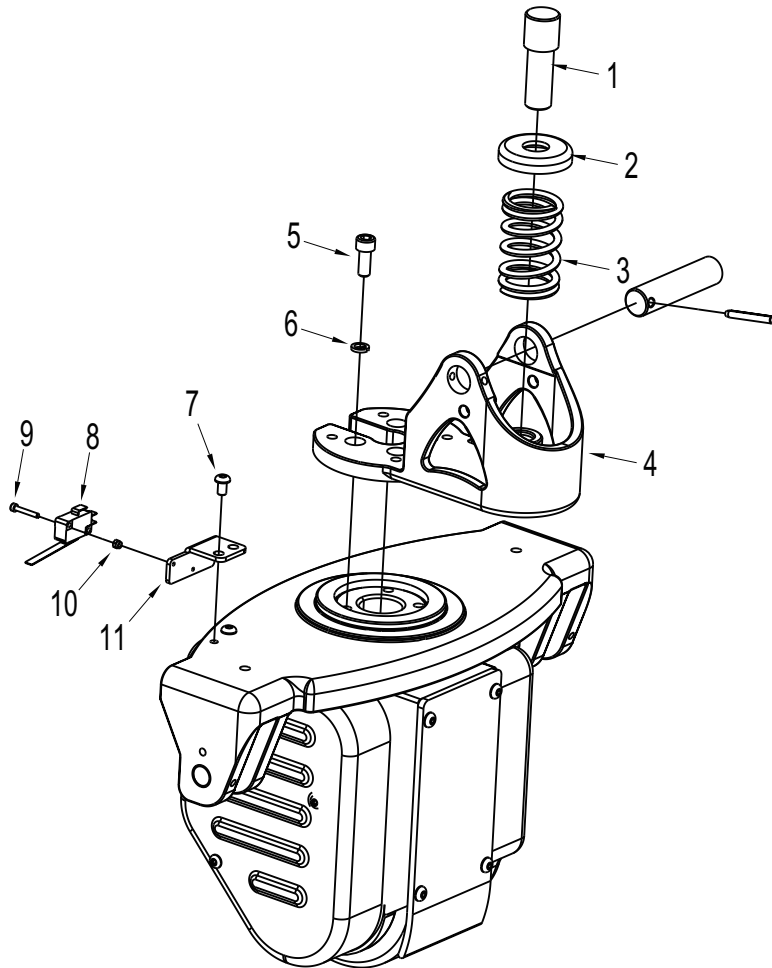


Fig. 3 Driving system

ITEM			#FOR
#	PART#	NAME	ASSY.
1	30202012	Hydraulic axle	1
2	30202013	Spring cover	1
3	30202014	Spring	1
4	30202010	Handle support	1
5	20101801	Screw	4
6	20601001	Washer	4
7	20102601	Screw	2
8	10301014	Proximity switch	1
9	20101302	Screw	2
10	20402002	Nut	2
11	30402041	Switch base	1

Fig. 4 Drive assembly

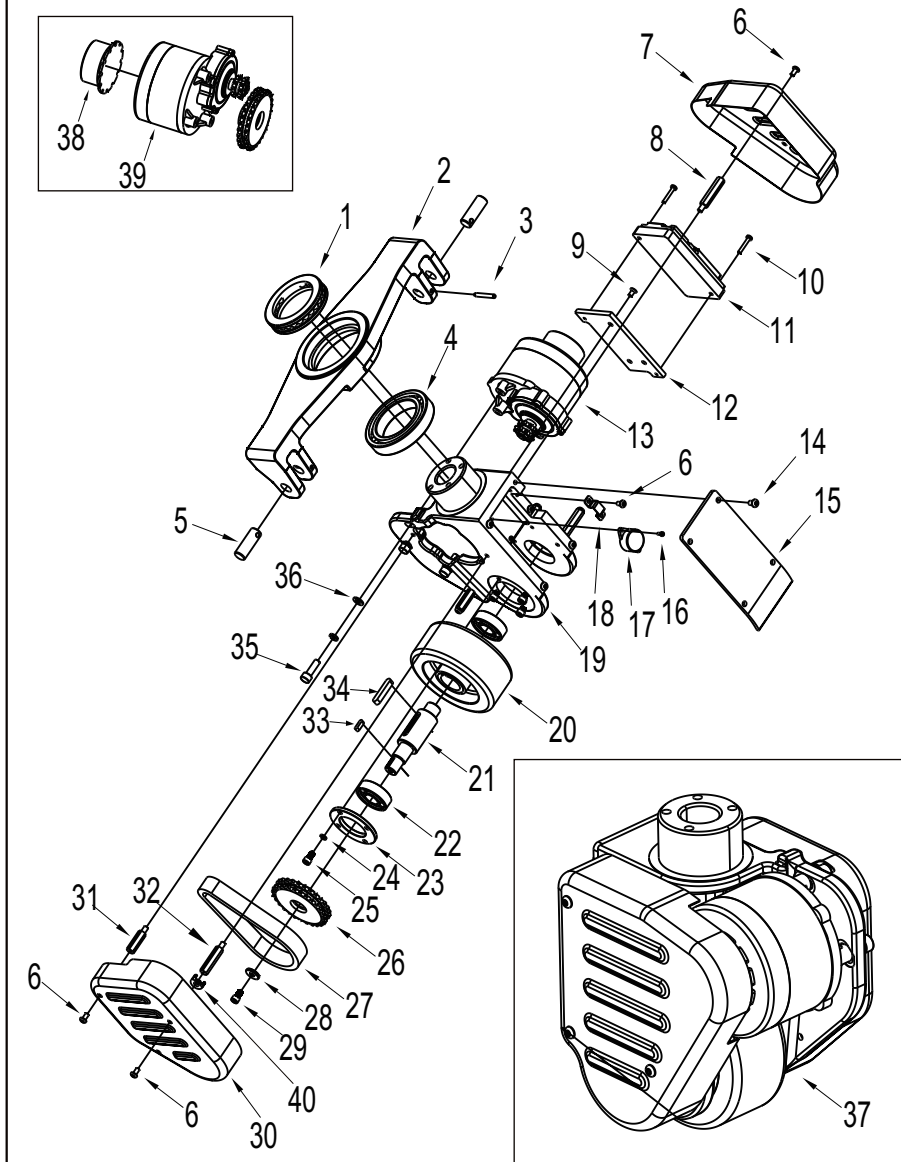


Fig. 4 Drive assembly

ITEM #	PART#	NAME	#FOR ASSY.
1	20503001	Bearing	1
2	30102006	Connecting frame	1
3	20901002	Spring pin	2
4	20501002	Bearing	1
5	30102007	Axle	2
6	20102501	Screw	8
7	30102004	Right cover	1
8	30102012	Connecting post	3
9	20103501	Screw	3
10	20102401	Screw	2
11	10301023	Controller	1
12	30102013	Mounting plate	1
13	30101003	Motor assembly	1
14	20102601	Screw	4
15	30102003	Cover plate	1
16	20302003	Screw	2
17	10301001	Buzzer	1
18	30102009	Plate	1
19	30102002	Driving wheel support	1
20	30102015	Driving wheel	1
21	30102016	Axle	1
22	20501001	Bearing	2
23	30102083	Cover plate	1
24	20601002	Washer	4
25	20101602	Screw	4
26	30102092	Sprocket	1
27	21301001	Chain	1
28	30102010	Washer	1
29	20101601	Screw	1
30	30102005	Left cover plate	1
31	30102085	Connecting post 3	2
32	30102084	Connecting post 2	1
33	30102011	Key	1
34	30102014	Key	1
35	20101803	Screw	3
36	20701001	Washer	3
37	30101024	Drive assembly	1
38	30101027	Brake assy	1
39	30101028	Motor	1
40	30102111	Anti noise pad	6

Fig. 5 Hydraulic unit assembly

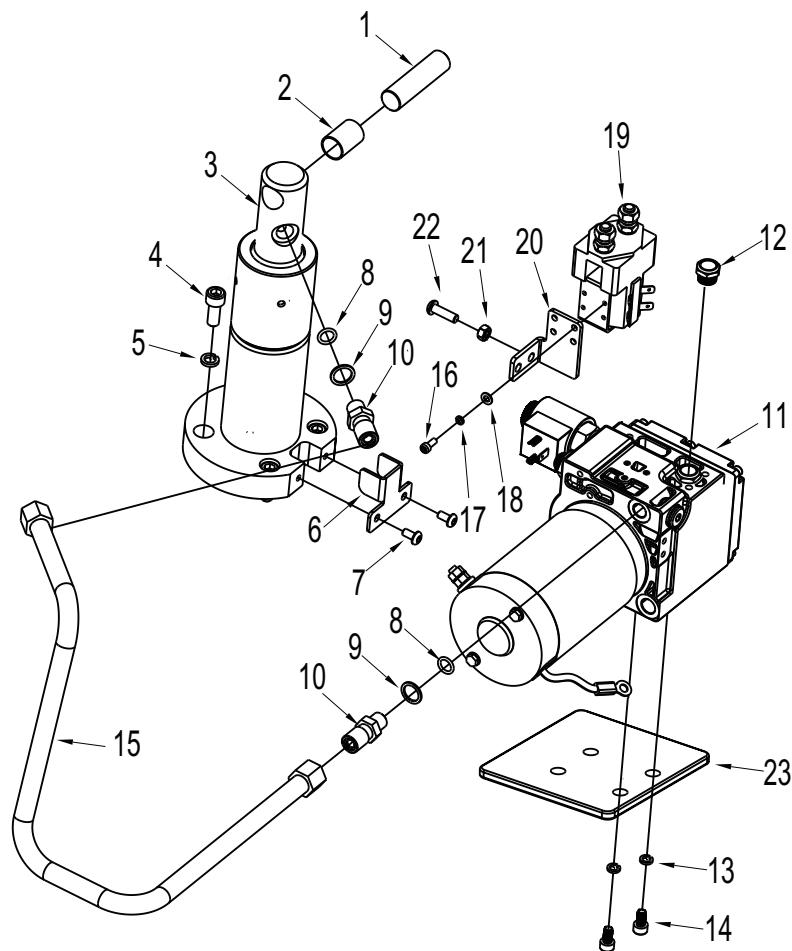


Fig. 5 Hydraulic unit assembly

ITEM #	PART#	NAME	#FOR ASSY.
1	30202024	Piston rod fixed shaft	1
2	21401003	Self-lubricating bearing	1
3	30201011	Cylinder assembly	1
4	20101801	Screw	4
5	20601001	Washer	4
6	30202035	Clip	1
7	20101604	Screw	2
8	21101006	O ring	2
9	30202023	Washer	2
10	30202022	Hose connector	2
11	30201014	Hydraulic station	1
12	30202027	Screw	4
13	20601002	Washer	4
14	20101601	Screw	4
15	30202021	High pressure hose	1
16	20101403	Screw	4
17	20701003	Washer	4
18	20601003	Washer	4
19	10301013	Contactor	1
20	30202034	Contactor bracket	1
21	20402001	Nut	2
22	20102602	Screw	2
23	30202036	Tank block	1

Fig.6 Cylinder assembly

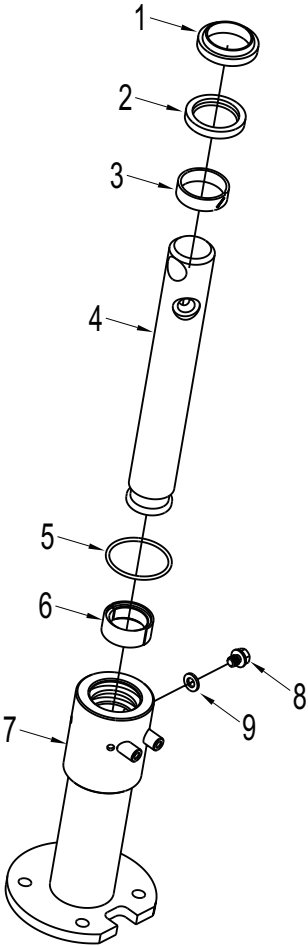


Fig.6 Cylinder assembly

ITEM			#FOR
#	PART#	NAME	ASSY.
1	21201003	Dust ring	1
2	21102003	Seal washer	1
3	30202018	Guide belt	1
4	30202020	Piston rod	1
5	21101005	O-ring	1
6	30202019	Sliding sleeve	1
7	30201012	Cylinder assembly	1
8	30202028	Screw	1
9	30202029	Washer	1

Fig. 7 Frame

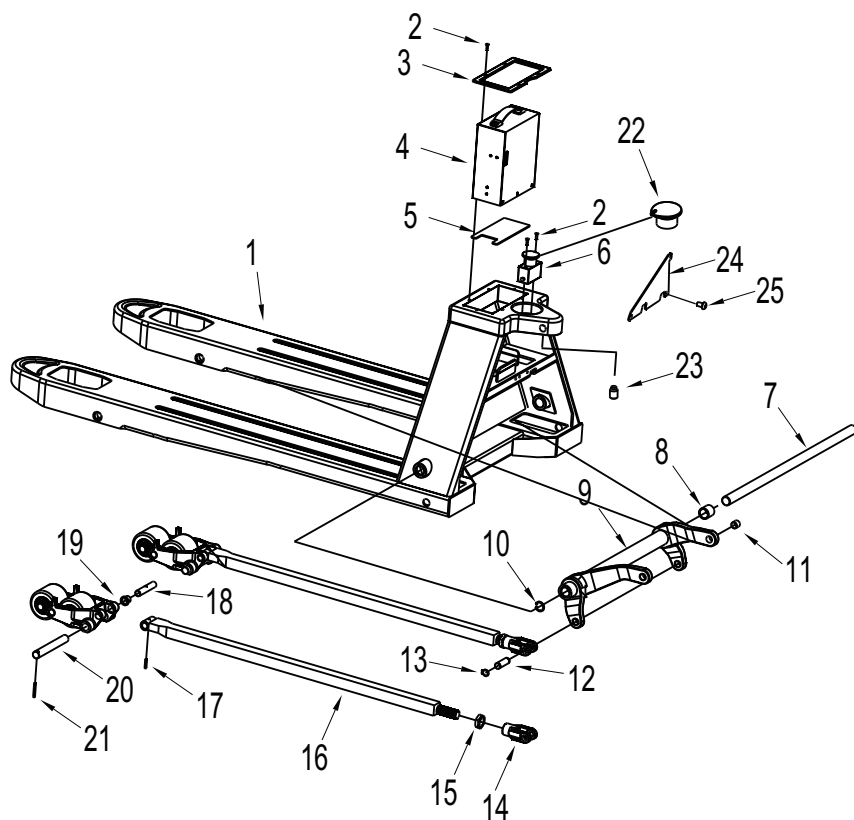


Fig. 7 Frame

ITEM #	PART#图号	NAME	#FOR ASSY.
1	30201003	Frame	1
2	20103501	Screw	2
3	30102023	Decorative board	1
4	10301003	Battery (20Ah Li)	1
5	30102022	Block	1
6	10301002	Emergency switch	1
7	30102021	Long axle550	1
	30102031	Long axle685	1
8	21401001	Bearing	2
9	30101016	Bracket arm550	1
	30101017	Bracket arm685	1
10	20802002	Ring	2
11	21401002	Bearing	4
12	30102024	Axle	2
13	20801001	Ring	4
14	30102059	Joint	2
15	20403001	Nut	2
16	30101014	Connecting rod1150	2
	30101015	Connecting rod1220	2
17	20901004	Spring pin	2
18	30102058	Axle	2
19	21402002	Bearing	4
20	30102025	Axle	2
21	20901002	Spring pin	2
22	10301008	Emergency switch cover	1
23	20104801	Screw	1
24	30202040	Cover plate	1
	30202041	Cover plate	1
	30202042	Cover plate	1
25	20102501	Screw	3

Fig.8 Double loading wheel assembly

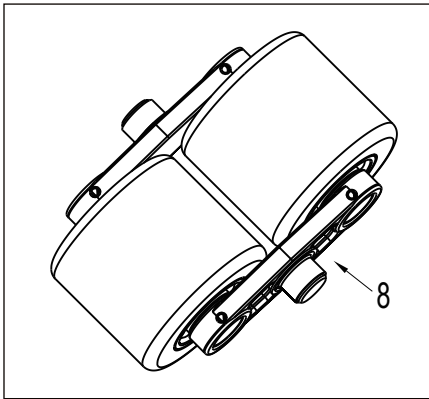
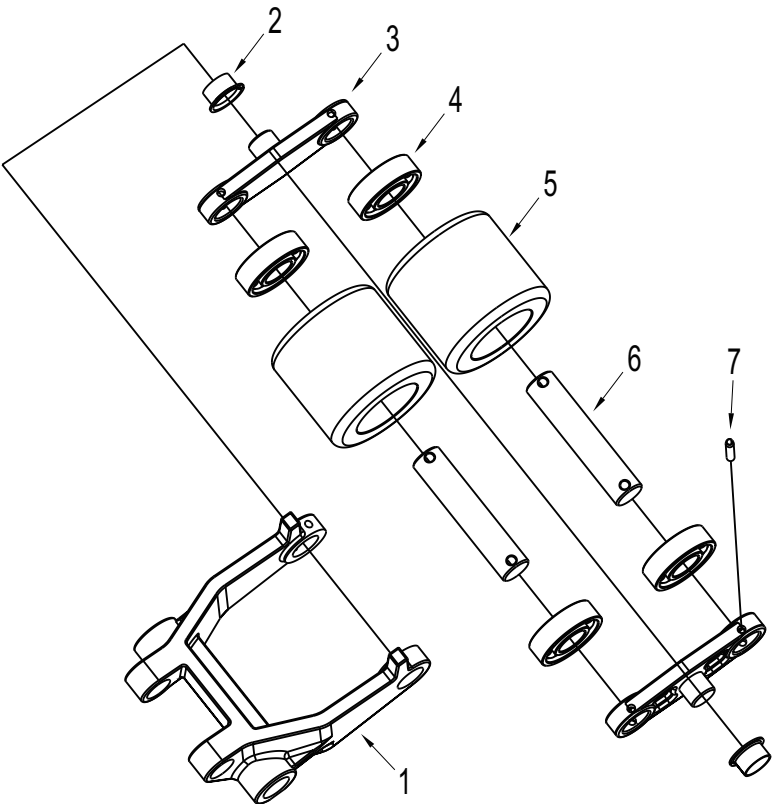


Fig.8 Double loading wheel assembly

ITEM			#FOR
#	PART#	NAME	ASSY.
1	30102057	Wheel fork	2
2	21402001	Self-lubricating bearing	4
3	30102027	Splint	4
4	20501001	Bearing	8
5	30102029	Double loading wheel	4
6	30102028	Axle	4
7	20901003	Spring pin	8
8	30101025	Double loading wheel assy	2

Fig. 9 Single loading wheel assembly

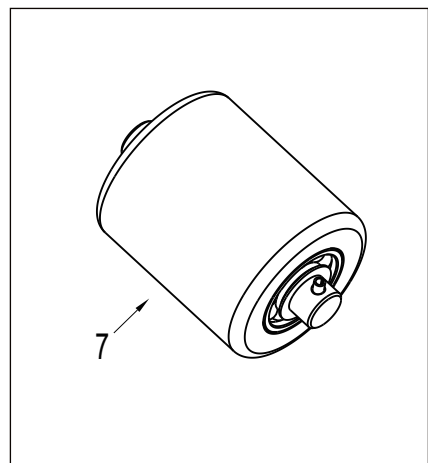
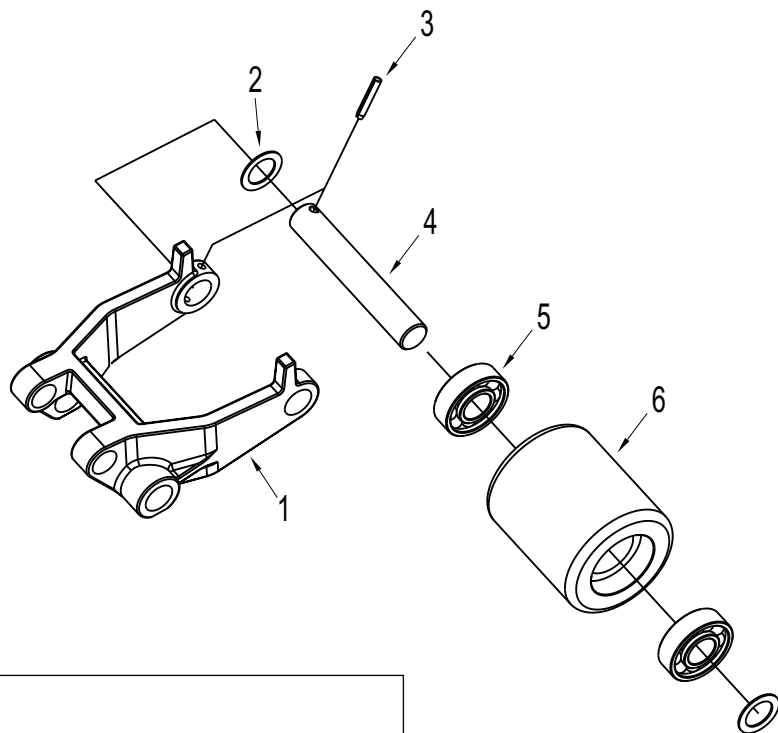


Fig. 9 Single loading wheel assembly

ITEM				#FOR
#	PART#	NAME		ASSY.
1	30102057	Wheel fork		2
2	30102082	Washer		4
3	20901003	Spring pin		2
4	30102080	Axle		2
5	20501001	Bearing		4
6	30102081	Single loading wheel		2
7	30101026	Single loading wheel assy		2

Fig.10 Charger

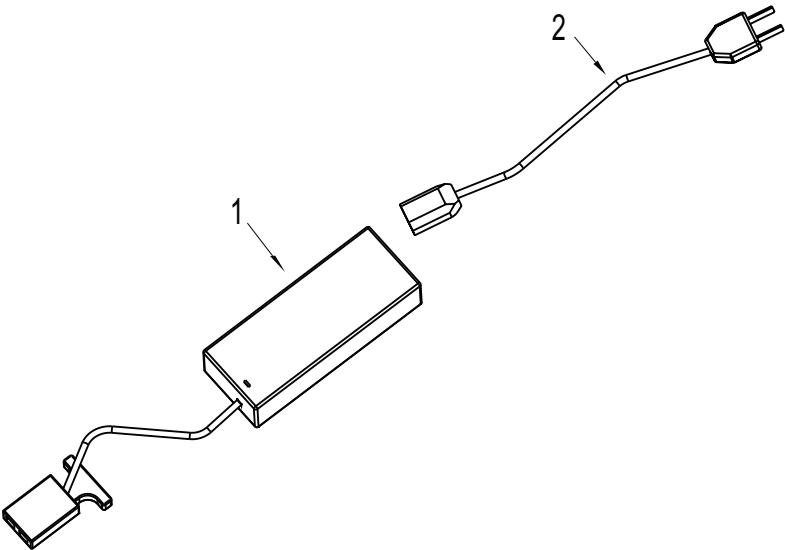


Fig.10 Charger

ITEM #	PART#	NAME		#FOR ASSY.
1	10301005	Charger	220V	1
	10301006	Charger	110V	1
2	10302002	Plug (European standard)		1
	10302003	Plug (Australian Standard National standard)		1
	10302001	Plug (American Standard)		1
	10302004	Plug (British Standard)		1